

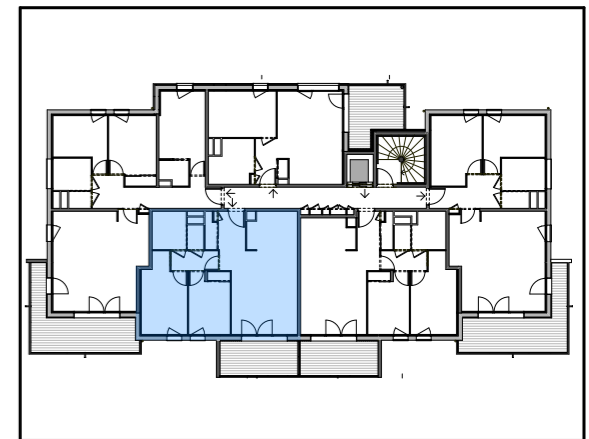


# FLOWER

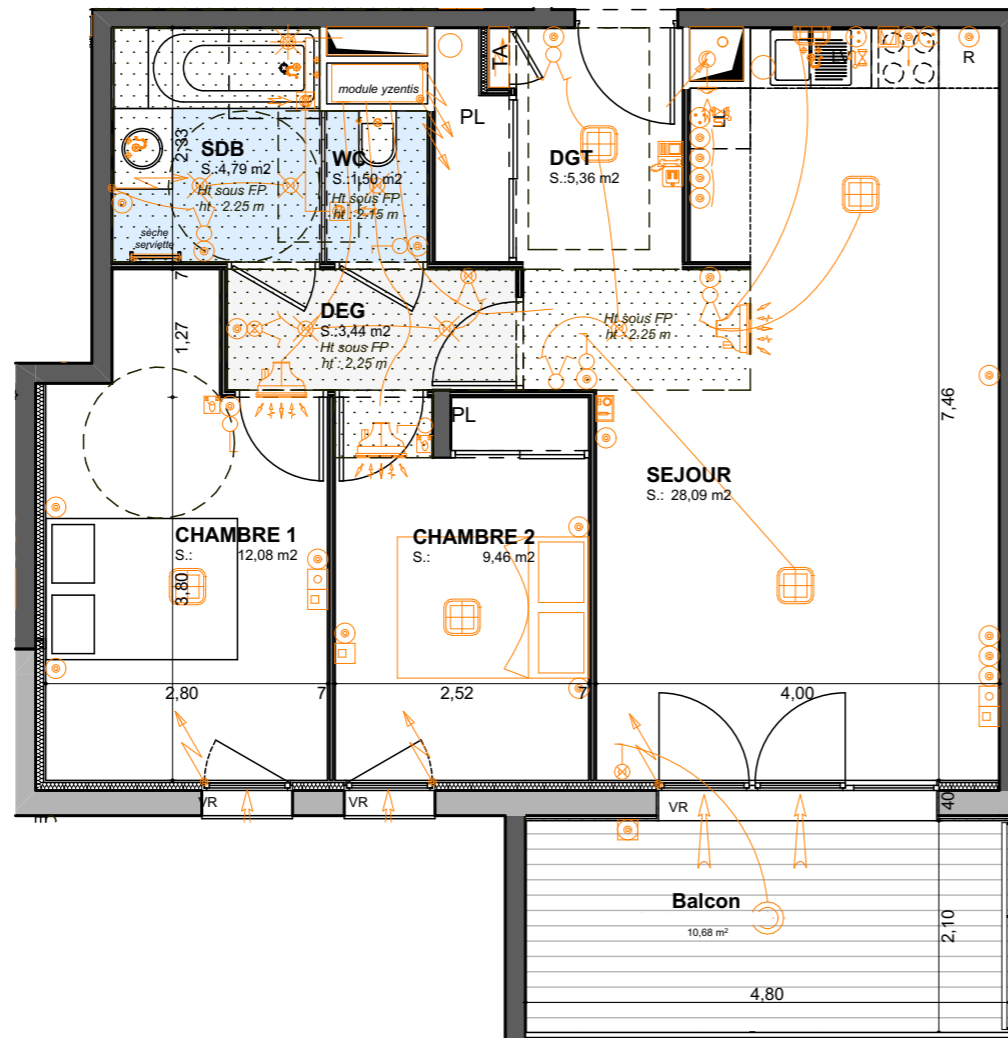
à NEYDENS

## BÂTIMENT A

Niveau +1

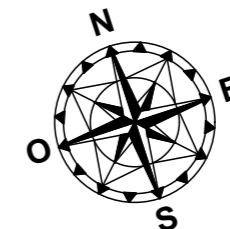


## APPARTEMENT T3 - A 103



SURFACES	HABITABLE
CHAMBRE 1	12,08
CHAMBRE 2	9,46
DEG	3,44
DGT	5,36
SDB	4,79
SEJOUR	28,09
WC	1,50
<b>TOTAL surface habitable</b>	<b>64,72 m<sup>2</sup></b>

ANNEXES	
BALCON	10,68 m <sup>2</sup>



Echelle : 1/75<sup>ème</sup>

19/01/2016

 Y. PONCET  
D. FERRE