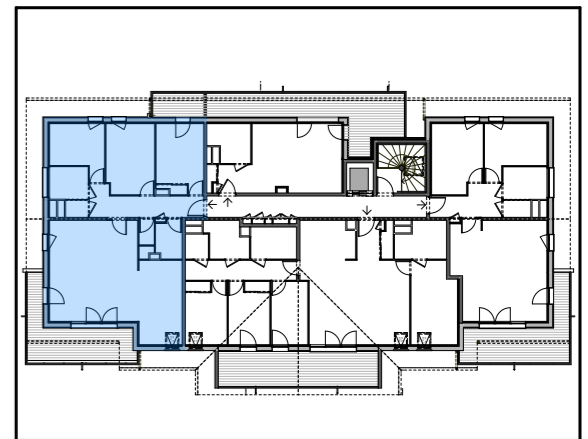


# FLOWER

à NEYDENS

**BÂTIMENT B**  
Niveau +2



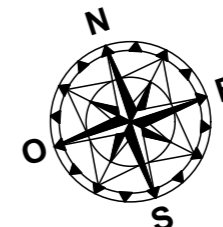
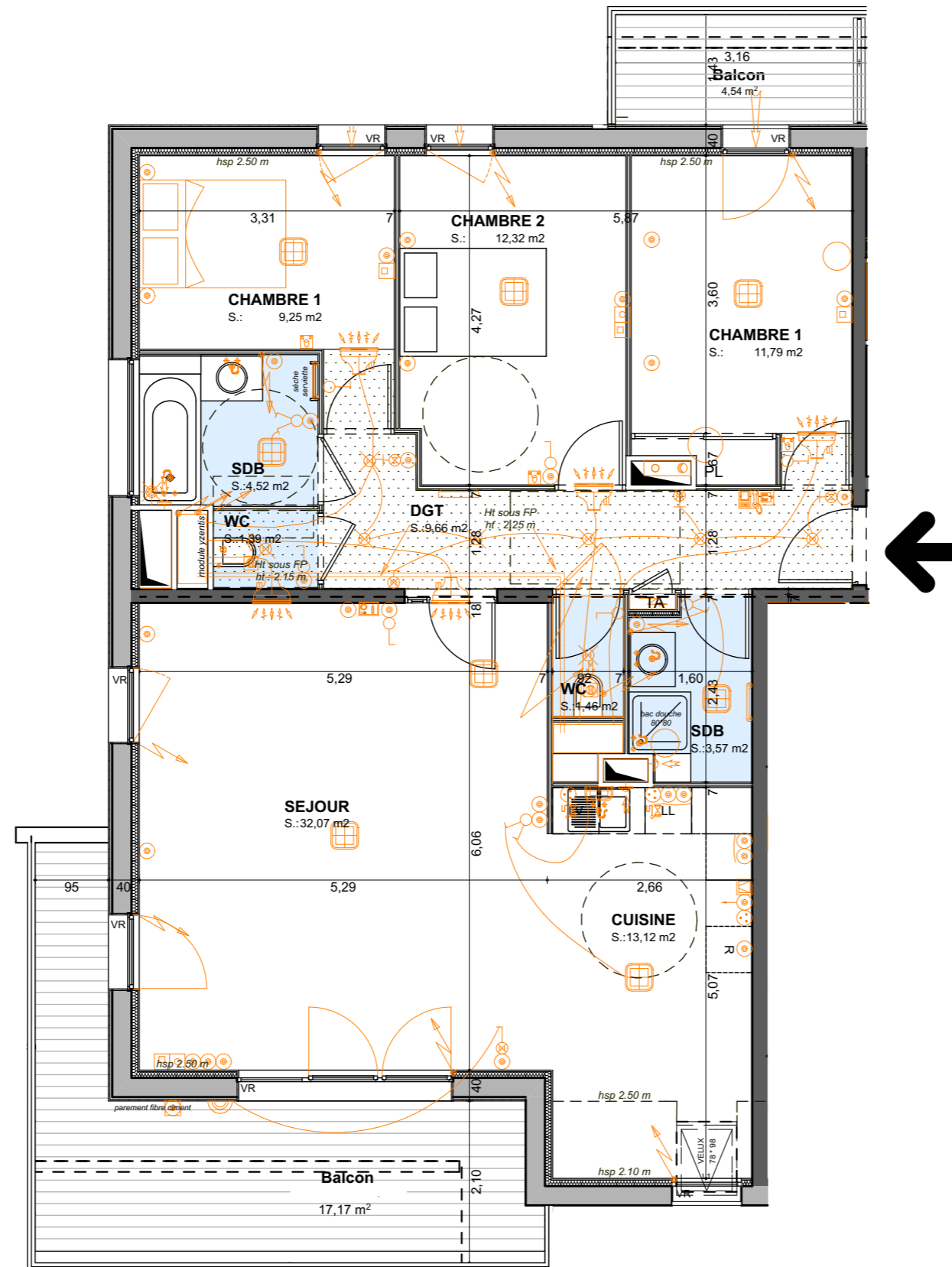
## APPARTEMENT T4 - B 203

SURFACES	HABITABLE
CHAMBRE 1	9,25
CHAMBRE 1	11,79
CHAMBRE 2	12,32
CUISINE	13,12
DGT	9,66
SDB	3,57
SDB	4,52
SEJOUR	32,07
WC	1,39
WC	1,46
<b>TOTAL surface habitable</b>	<b>99,15 m<sup>2</sup></b>

ANNEXES	
BALCON	17,17 m <sup>2</sup>
BALCON	4,54 m <sup>2</sup>

19/01/2016

**Y. PONCET**  
**D. FERRE**



Echelle : 1/75<sup>ème</sup>